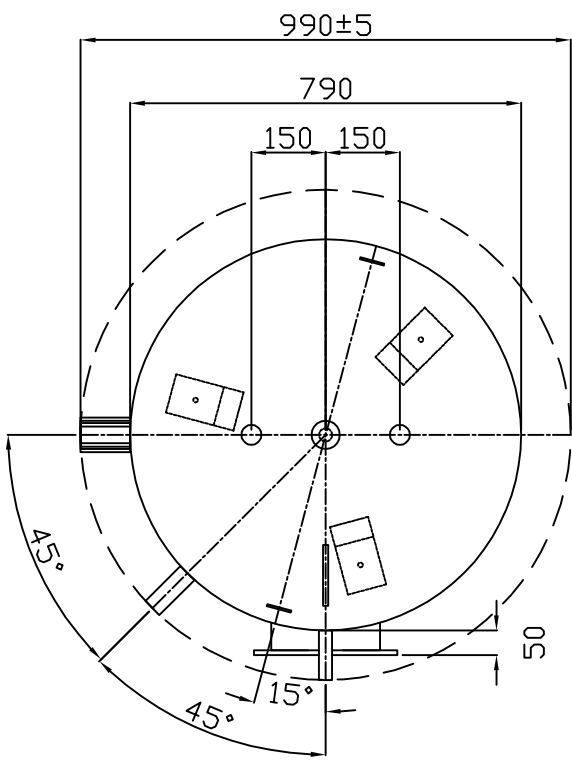
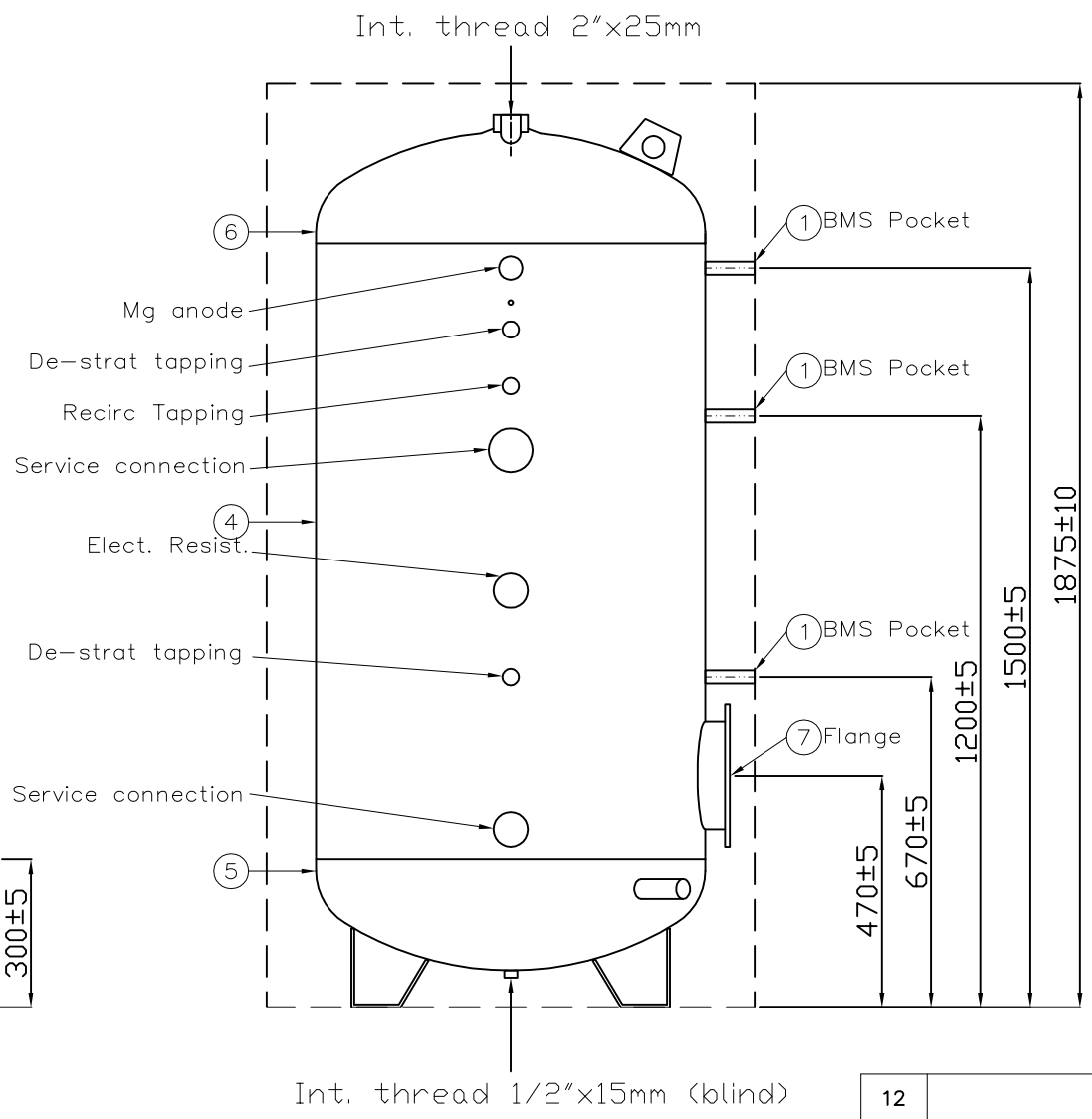
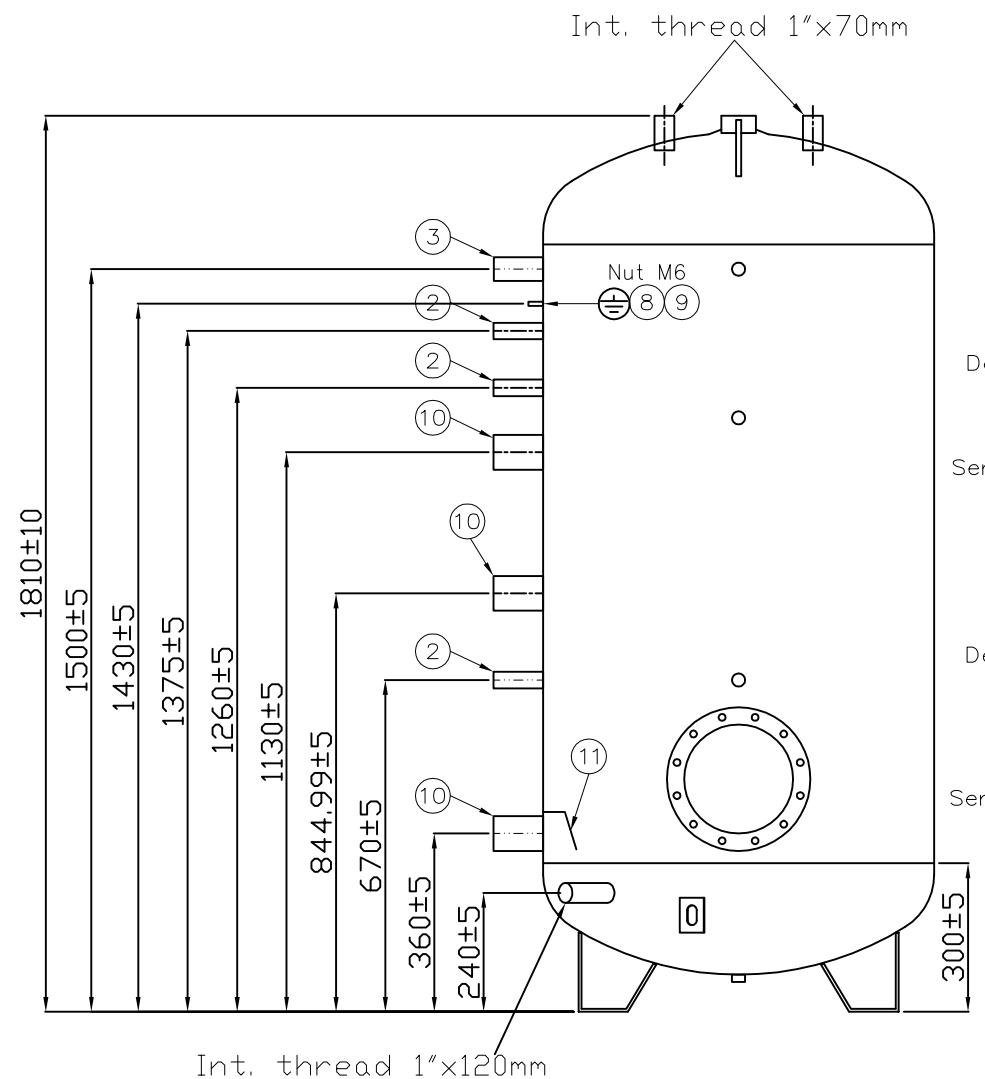


Final draft, agreed and signed 12.1.21

Andy Clifford



- SERBATOIO REALIZZATO SU SPECIFICHE DEL CLIENTE
 - STORAGE TANK REALIZED ON CUSTOMER SPECIFICATIONS
 - BALLON REALISE SUR SPECIFIQUE DU CLIENT

POS.	DESCRIPTION:	MATERIAL:	Q.TY:	CODE:	REVISIONS:
12					
11	Flap	S235JR	1	91920013	
10	Internal thread 2"x105 mm	S235JR	3	91710710	
9	Screw TE M6x10 mm	GALVANIZED	1	98120010	
8	Nut M6x30mm	S235JR	1	98610001	
7	Flange Ø290	S235JR	1	91C10016	
6	Upper Semifinished	DD12/S235JR	1	F01804S3861	
5	Lower Semifinished	DD12/S235JR	1	I08A040030	
4	Metal sheet 2472x1250x30/10	DD12	1	912S3861 91120270	
3	Internal thread 1"1/4x105 mm	S235JR	1	91710500	
2	Internal thread 3/4"x105 mm	S235JR	3	91710240	
1	Internal thread 1/2"x105 mm	S235JR	3	91710130	06 05 04 03 02 01 00

TESTING PRESSURE IS ONE AND A HALF OF WORKING PRESSURE					
EFFECTIVE CAPACITY(LT.):	PRIMARY CAPACITY (LT.):	PRIMARY WORKING PRESSURE (BAR):	SECONDARY CAPACITY (LT.):	SECONDARY WORKING PRESSURE (BAR):	WEIGHT (KG):
749	...	10	200

ALL RIGHTS RESERVED. THIS DRAWING IS NOT TO BE GIVEN TO THIRD PARTS WITHOUT OUR WRITTEN AUTHORIZATION					
MATERIAL: S235JR / DD12		TREATMENT: SMALGLASS		DESCRIPTION: PROSTOR BV 800	
FIRST ANGLE PROJECTION: 		DESIGNER: D. MATTIOLI		DATE CREATED: 25-09-17	
DIMENSIONS IN MILLIMETERS		CHECKED: G. ZENARI		Commercial Hot Water Solutions Ltd.	
TOLERANCES NOT SHOWN: EN 22768-1 - V		CHECKED: ...		CODE: B09804S3861	

17-12-2020 Added 2" on the side on request of client (F. Perino)
 16-01-2020 Removed 1 1/2 sleeve for resistance (D.Mattioli)
 22-03-18 Added 1 1/2 sleeve for resistance (D.Mattioli)
 25-09-17 Created drawing